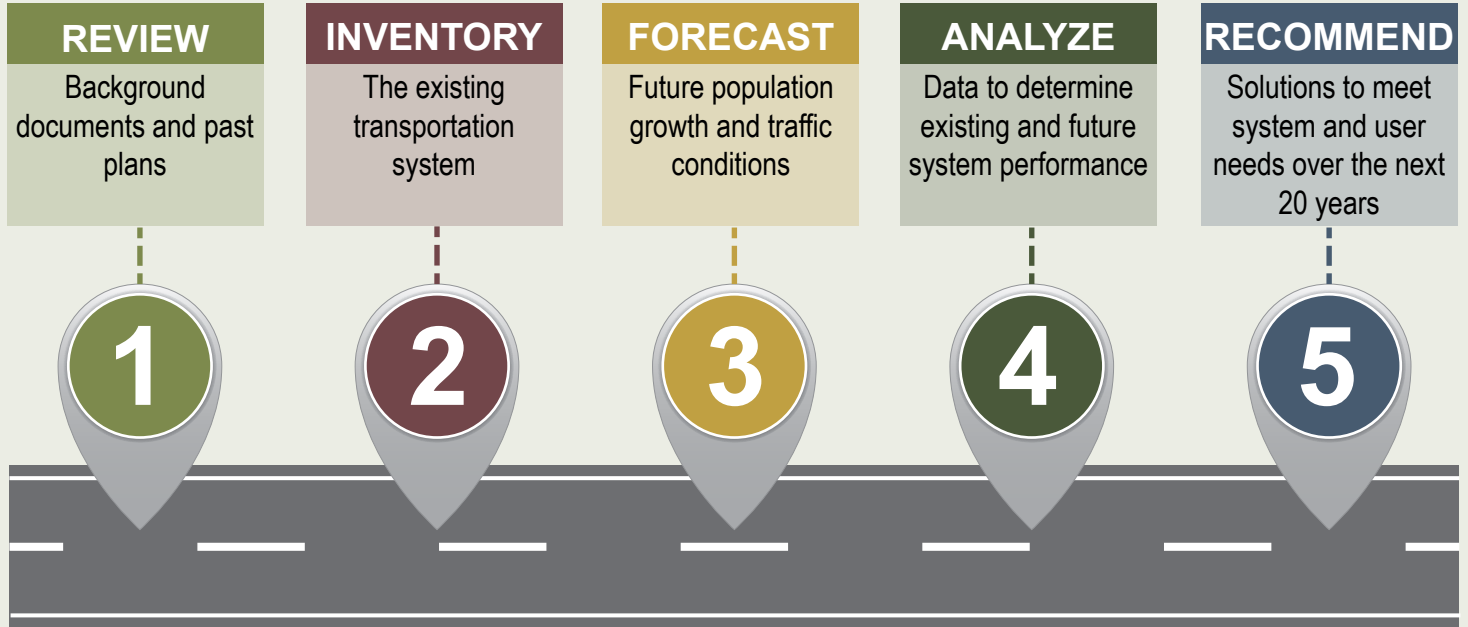


WHAT IS A TRANSPORTATION PLAN?

A transportation plan **provides a blueprint for guiding transportation infrastructure investments based on system needs and anticipated developments over the planning horizon.** Transportation plans consider previously completed planning efforts, provide an in-depth analysis of existing and projected traffic, safety, and infrastructure conditions, and identify feasible recommendations to be implemented over the planning horizon.



PROJECT DEVELOPMENT

Transportation plans help identify potential improvements to be completed as funding becomes available. These planning efforts are conducted before project identification, design, right-of-way acquisition, and construction.

